

Some TMVA test for the HET Analysis

Dario Moricciani

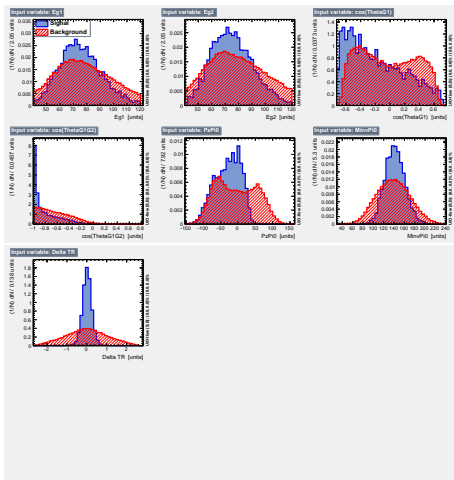
INFN - LNF

Dario.Moricciani@Inf.infn.it

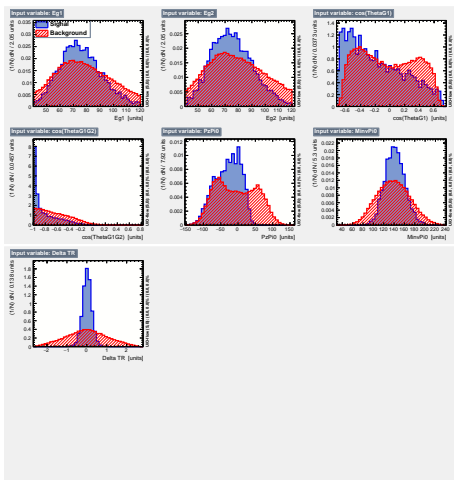
November 13, 2018

```
Test2) PrepareTrainingAndTestTree( "", "",  
    "nTrain_Signal=X:nTrain_Background=Y:  
    nTest_Signal=0:nTest_Background=0:  
    SplitMode=Random:NormMode=NumEvents:!V");  
Test3) PrepareTrainingAndTestTree( "", X, Y, 0, 0,  
    "SplitMode=Random:NormMode=NumEvents:!V");
```

Test2_A : Input Variables

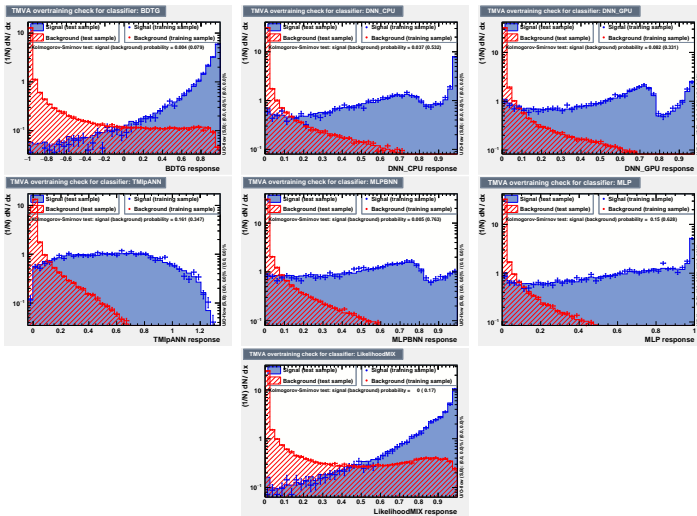


Test3_A : Input Variables



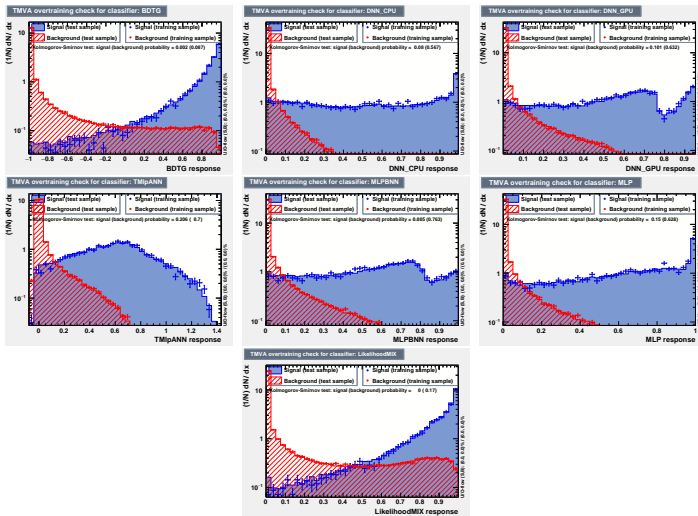
NTest2_A : $N_{train}^{Sig} = 5000$, $N_{train}^{Back} = 50000$

- Option = "SplitMode = Random : NormMode = NumEvents!V"

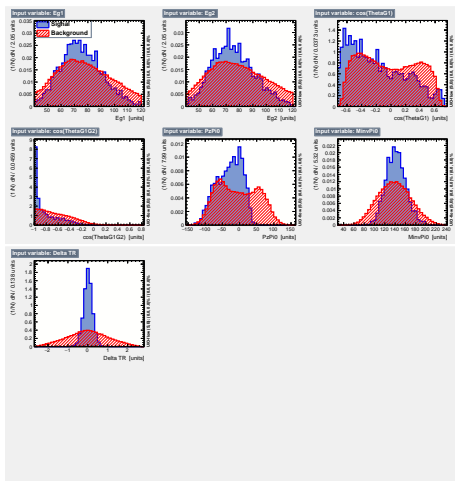


NTest3_A : $N_{train}^{Sig} = 5000$, $N_{train}^{Back} = 50000$

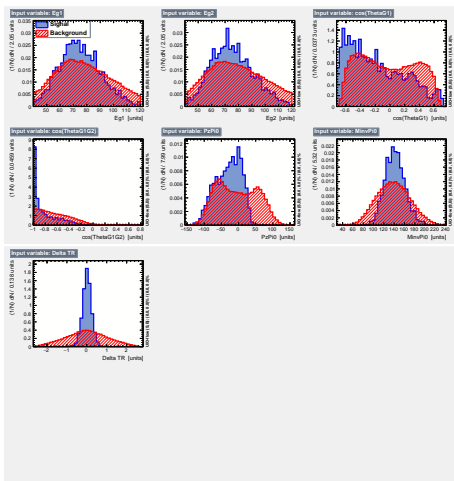
- Option = "SplitMode = Random : NormMode = NumEvents!V"



Test2_B : Input Variables

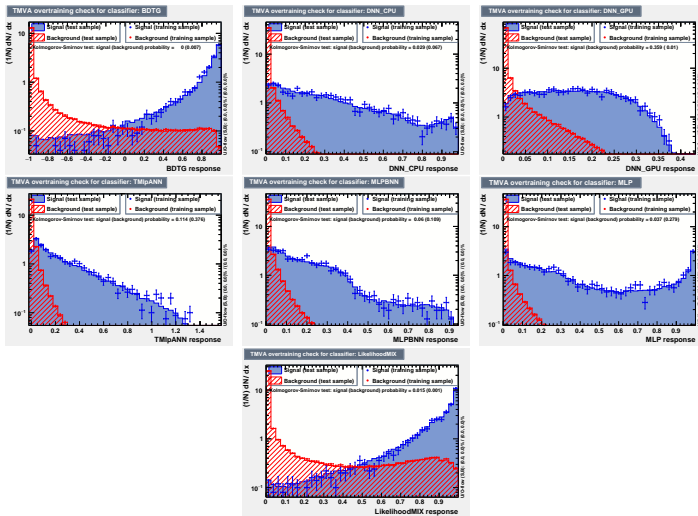


Test3_B : Input Variables



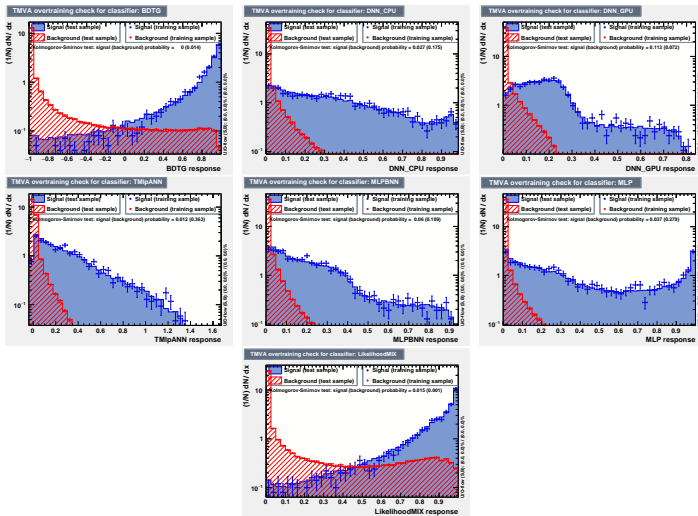
NTest2_B : $N_{train}^{Sig} = 2000$, $N_{train}^{Back} = 100000$

- Option = "SplitMode = Random : NormMode = NumEvents!V"



NTest3_B : $N_{train}^{Sig} = 2000$, $N_{train}^{Back} = 100000$

- Option = "SplitMode = Random : NormMode = NumEvents!V"



The End